

CIA TOTI TORONELL

www.totitorone11.com



MICRO SHAKESPEARE

PRESENTATION

MICROSHAKESPEARE was born based on a commission co-produced with the National Theatre of London.

With more than 500 representations, this show has been seen in 15 different countries and translated into 10 languages (so far).

Since a long time ago the Cia Toti Toronell has focused its research on new ways and forms to interact with the audience. With that same idea, and together with Quim Domene in the plastic part, five small theater-shaped artworks have been created to play, in each one, a different Shakespeare's theatre piece (Hamlet, Macbeth, Romeo and Julliet, The Tempest and A Midsummer Night's Dream).

MICROSHAKESPEARE is a small objectual theater delicatessen where the spectators listen to the piece with headphones during the eight minutes that each show lasts, while another person of the audience is playing the role of puppeteer following the given instructions.



OPERATION OF THE SHOW

In order to live the experience, the audience will join in groups of two or three people each. One of the participants will be placed behind the little theater to become the actor and the other ones will take a seat in front of the box to become the audience.

The actor will have to perform moving objects inside the little theater following the instructions given through the headphones. Not really knowing exactly what is doing himself, he or she will spend a good time playing puppets.

The spectators, who are on the other side of the theater, will listen to a Shakespeare history narrated by the headphones and performed by the objects manipulated by the “actor”.

These are Shakespeare’s master pieces as you have never seen it... or listened to it; humor, love, intrigue, death, revenge and popcorn.

The audience can choose the language with which they want to enjoy the show. Currently it is available in:

- German
- English
- Spanish
- Catalan
- Basque
- French
- Deutsch
- Portuguese
- Mandarin Chinese
- Cantones Chinese



TECHNICAL DATASHEET

SCENIC SPACE

of 8x8x3m (width, depth and height)

ELECTRICITY

Stream dam of 220v not further than 10 meters from the scenic space.

POWER minimum 200w.

DRESSING ROOM

WC, 2 chairs, mirror, tap water, a box of mineral water bottles.

VAN

A parking place for the van not farer than a minute away from the scenic place.

LIGHT

If lights are needed during evening performances, please provide NON DIRECT light.

STEWARDSHIP

a person from the organization who can stay from the arrival till the departure of the company. This person must be also present during the performances.

ASSEMBLY: 2.00 h

DISASSEMBLY: 1.30 h

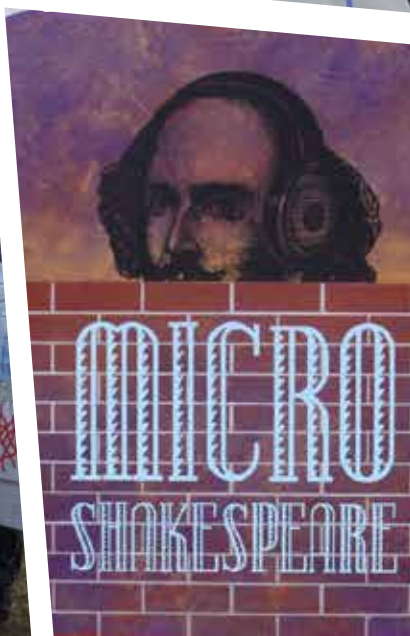


We recommend to situate the installation on an isolated space, in order acoustic contamination and loudly sound cannot interfere with the show audios.



Maximum capacity, to 270 people in 3 hours.

PHOTO GALLERY



CONTACT



CIA TOTI TORONELL / LAITRUM TEATRE
nas@totitoronell.com
www.totitoronell.com
(+34) 972195120 / (+34) 619863307

BOOKINGS



ANA SALA - IKEBANAH ARTES ESCÉNICAS
(+34) 619951791
anasala@ikebanah.es
www.ikebanah.es



A CO-PRODUCTION OF:

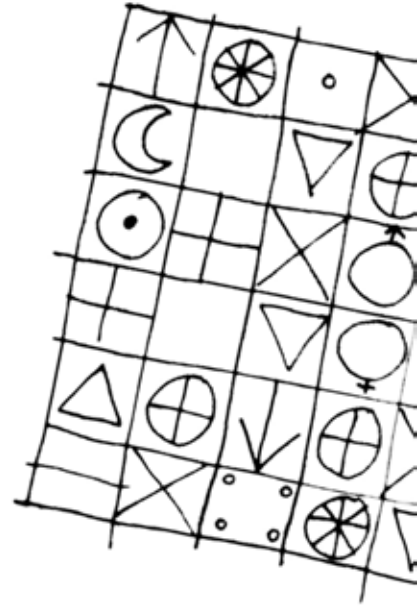
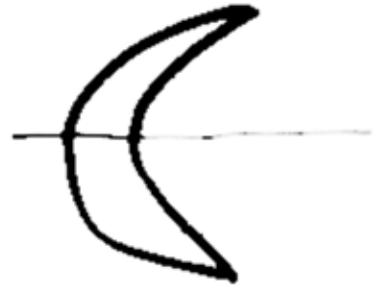


WITH THE SUPPORT OF:

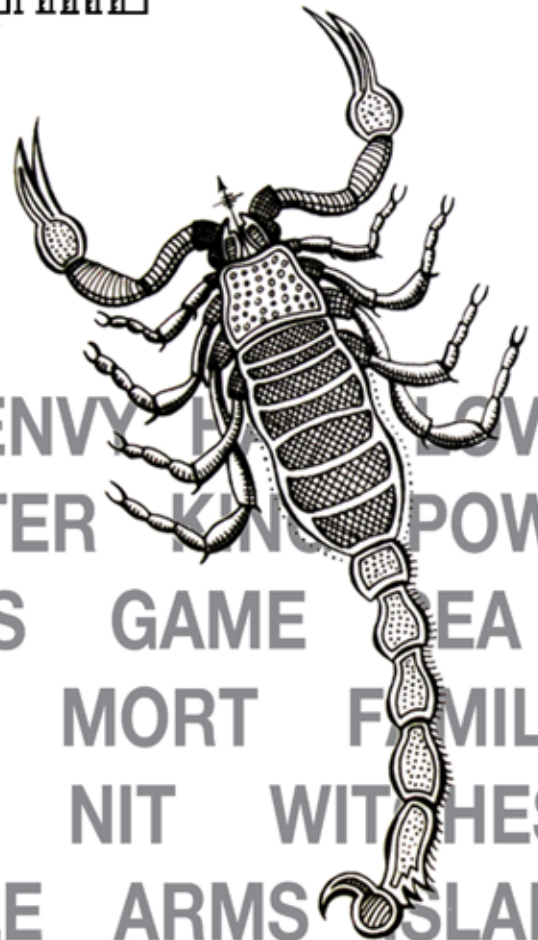


WITH THE
COLLABORATION OF:





MICRO SHAKESPEARE



LIFE BIRD TREASON ENVY LOVE D
SHIP AMOR WINTER KING POWER
AFFE NIGHT ARMS GAME EA NA
DECEP COMPLICITY MORT FAMILY
WHISK WOUND DAY NIT WIT HES
BALCONY MASKS CASTLE ARMS ISLAND
MAGIC STROM REI BOOK FOREST FAIRY M